

MIN. SCHNAUZER

D: 35.6 cm (14 ins)
B: 33 cm (13 ins)
 Too small or toyish
 Not typical
 Undesirable

SHIBA INU

D: 40 cm (15 ¾ ins)
B: 37 cm (14 ½ ins)
 Tolerance of 1.5 cm
 Smaller or taller
 (1/2 inch)

GERMAN PINSCHER

D: 43 – 48 cm (17 – 19 ins)
B: AS ABOVE

STD. SCHNAUZER

D: 48.3 cm (19 ins)
B: 45.7 cm (18 ins)
 Any variation
 more than 2.5 cm
 Undesirable (1 in)

SAMOYED

D: 51 – 56 cm
 (20 – 22 ins)

B: 46 – 51 cm
 (18 – 20 ins)
 Weight in proportion

PORTUGUESE

D: 50 – 57 cm
 (19 ½ -22 ½ ins)
 19 – 25 kg

B: 43 – 52 cm
 (17 – 20 ½ ins)
 16 – 22 kg

SIBERIAN HUSKY

D: 53.5 – 60 cm
 (21 – 23 ½ ins)
 20 – 27 kg
 (45 – 60 lbs)

B: 51 – 56 cm (20 – 22 ins)
 16 – 23 kg (35 – 50 lbs)
 Disqualify over:
D: 60 cm (23 ½ ins)
B: 56 cm (22 ins)

BOXER

D: 56 – 61 cm
 (22 – 24 ins)
 30 kg @ 23 ins
 (66 lbs)

B: 53 – 58.5 cm
 (21 – 23 ins)
 28 kg @ 22 ins
 (62 lbs)

ALASKAN MALAMUTE

D: 63.5 cm
 (25 ins)
 38.5 kg (85 lbs)

B: 58.5 cm
 (23 ins)
 34 kg (75 lbs)
 Desired freighting size

CENTRAL ASIAN

D: Not less than 65 cm
 (25 ½ ins)

B: Not less than 60 cm
 (23 ½ ins)

TIBETAN MASTIFF

D: Minimum 66 cm
 (26 ins)

B: Minimum 61 cm
 (24 ins)

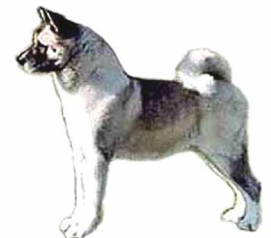
ROTTWEILER

D: Small 61 – 62 cm
 Med 63 – 64 cm
 (Correct) Large 65 – 66 cm
 V.Large 67 – 68 cm
 (24 – 26 ½ ins)
 Approx 50 kg (110 lbs)

B: Small 56 – 57 cm
 Med 58 – 59 cm
 Large 60 – 61 cm
 (Correct) V.Large 62 – 63 cm
 Approx 42 kg (95 lbs)

ITALIAN CORSO**D:** 64 – 68 cm
45 – 50 kg**B:** 60 – 64 cm
40 – 45 kg
Tolerance
2 cm or less**DOG DE BORDEAUX****D:** 60 – 68 cm
(23 ½ - 26 ¾ ins)
At least 50 kg
(110 lbs)**B:** 58 – 66 cm
(23 – 26 ins)
At least 45 kg (95 lbs)
1 cm under / 2cm over**BULL MASTIFF****D:** 63.5 – 68.5 cm
(25 – 27 ins)
50 – 59 kg
(110 – 130 lbs)**B:** 61 – 66 cm
(24 – 26 ins)
41 – 50 kg
(90 – 100 lbs)**DOBERMANN****D:** Ideal 69 cm
(27 ins)**B:** Ideal 65 cm
(25 ½ ins)**CANADIAN ESKIMO****D:** 58 – 70 cm
(23 – 27 ½ ins)
30 – 40 kg (66 – 88 lbs)**B:** 50 – 60 cm
(19 ½ - 23 ½ ins)
18 – 30 kg (40 – 66 lbs)**BERNESE MOUNTAIN****D:** 64 – 70 cm
(25 – 27 ½ ins)**B:** 58 – 66 cm
(23 – 26 ins)**GIANT SCHNAUZER****D:** 65 – 70 cm
(25 ½ - 27 ½ ins)**B:** 60 – 65 cm
(23 ½ - 25 ½ ins)

Variation outside undesirable

AKITA**D:** 66 – 71 cm
(26 – 28 ins)**B:** 61 – 66 cm
(24 – 26 ins)**NEWFOUNDLAND****D:** Average 71 cm
(28 ins)
63.5 – 68 kg (140 – 150 lbs)
Size and weight desirable
Symmetry maintained**B:** Average 66 cm
(26 ins)
50 – 54.5 kg (110 – 120 lbs)**BLACK RUSSIAN TERRIER****D:** 66 – 72 cm
(25.7 – 28.1 ins)**B:** 64 – 70 cm
(25 – 27.3 ins)**PYRENEAN MOUNTAIN DOG****D:** Minimum 70 cm
(28 ins)
Minimum 50 kg (110 lbs)**B:** Minimum 65 cm
(26 ins)
Minimum 40 kg (90 lbs)

NEAPOLITAN MASTIFF



MASTIFF



LEONBERGER



D: 65 – 75 cm
(25 ½ – 29 ½ ins)
60 – 70 kg
(132 – 154 lbs)

**Size a great desideratum
If combined with quality
Height and substance proportionate**

**72 – 80 cm
(28 – 31 ins)**

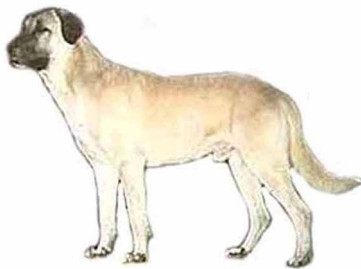
B: 60 – 68 cm
(23 ½ - 26 ½ ins)
50 – 60 kg
(110 – 132 lbs)

**65 – 75 cm
(25 – 29 ins)**

ANATOLIAN SHEPHERD



KANGAL DOG



ST BERNARD



D: 74 – 81 cm
(29 – 32 ins)
50 – 65 kg
(110 – 145 lbs)

**76 – 81.5 cm
(30 – 32 ins)
50 – 63.5 kg
(110 – 140 lbs)**

**70 – 90 cm
(27 ½ - 35 ½ ins)**

B: 71 – 79 cm
(28 – 31 ins)
40 – 55 kg
(85 – 120 lbs)

**71 - 78.5 cm
(28 – 31 ins)
41 – 59 kg
(90 – 130 lbs)**

**65 – 80 cm
(25 ½ - 31 ½ ins)**